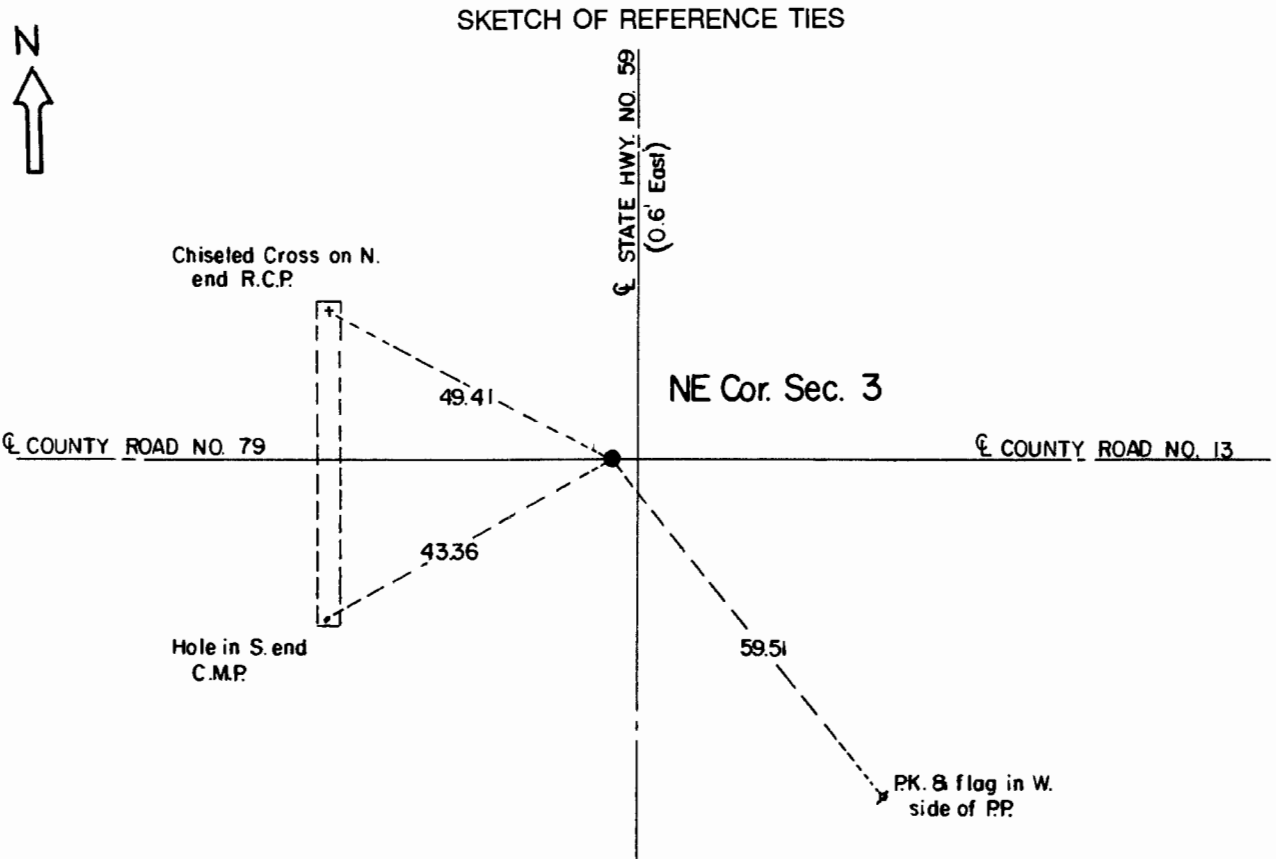


CERTIFICATE OF LOCATION OF GOVERNMENT CORNER

Northeast Corner of Section **3** , Township **107** , Range **41** 5th P.M.
STATE OF MINNESOTA, County of Murray.

Statement: Aug. 9, 1989 - Found brass rod in old concrete pavement placed by the Minnesota Department of Highways in 1932.



Statement of evidence relative to this corner location is on the back of page.

I hereby certify that this document and the data contained herein was prepared by me or under my direct supervision and that I am a duly Registered Land Surveyor under the laws of the State of Minnesota.

Duane A. Bonnema Nov 6, 1989
Duane A. Bonnema Date

Minnesota Registration No. 14895

OFFICE OF THE COUNTY RECORDER
COUNTY OF MURRAY

NOV 15 1989

I hereby certify that this document was filed in the County Recorder's office at ___M. on the ___ day of ___ A.D., 19__

County Recorder *James H. Johnson*

By _____, Deputy
DOCUMENT NO. _____

Northeast Cor. Sec. 3 T107N-R41W

Statement:

- July 1861 Original Government Land Office Surveyor J. W. Myers records in his field notes, "drove charred stake, made mound of earth and sod with trench pits as per instructions."*
- May 14, 1901 J. W. Woolstencroft, County Surveyor, records in the County Surveyor's Record Book, page 132, that he measured to the Corner, however, he doesn't state what type of Monument was at the Corner.*
- 1932 The Minnesota Highway Department notes in their field notes "Sec. Cor./5.9 ahead of P.I./Brass Plug Inp." They also recorded that the Section Corner is 0.4 feet West of the centerline tangent. The symbol that is shown at this location indicates that they found a stone here.*
- Aug. 9, 1989 Duane A. Bonnema, L.S. Reg. No. 14895, removed 4 inches of asphalt pavement and found a 3/4 in. dia. brass rod placed in the surface of the old concrete pavement by the Minnesota Department of Transportation in 1931. Further digging was hampered due to the concrete pavement which contains an abundance of steel reinforcing rod. The location of the brass rod appears to be the best available evidence of the corner position.*